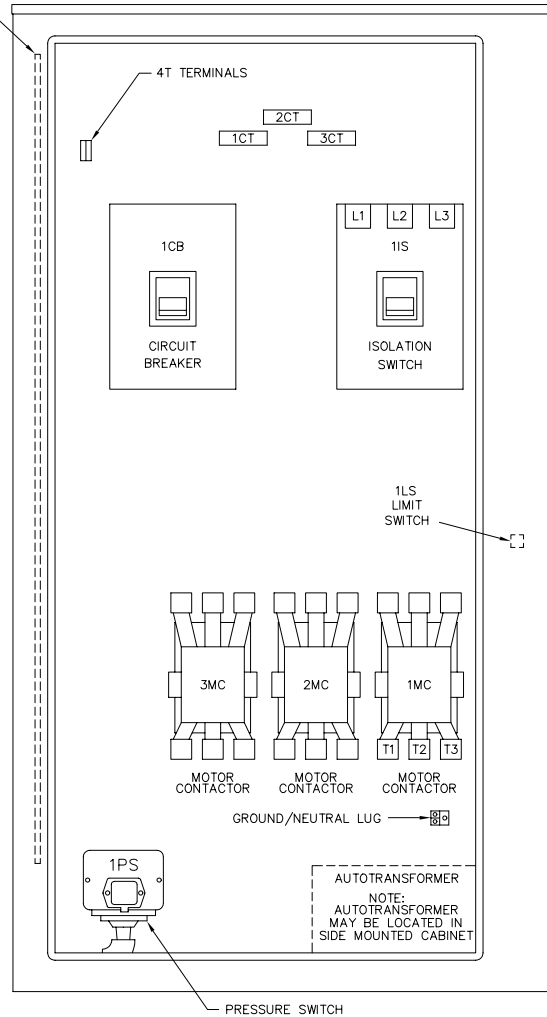
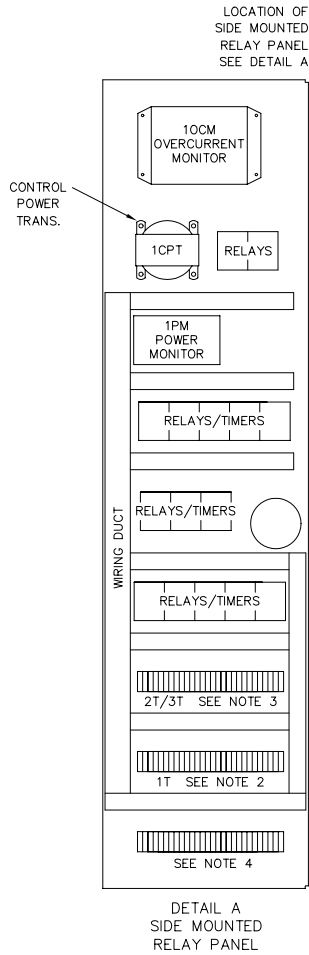


1T\*  
FIELD  
TERMINALS

- |    |    |  |
|----|----|--|
| 1  | 1  | } N.O. CONTACT. OPENS ON<br>LOSS OF CONTROLLER POWER   |
| 2  | 2  |  |
| 3  | 3  | } N.C. CONTACT. CLOSSES ON<br>LOSS OF CONTROLLER POWER |
| 4  | 4  |  |
| 5  | 5  | } N.O. CONTACT. CLOSSES<br>WHEN PUMP RUNNING           |
| 6  | 6  |  |
| 7  | 7  | } N.C. CONTACT. OPENS<br>WHEN PUMP RUNNING             |
| 8  | 8  |  |
| 9  | 9  | } REMOTE START. PUMP WILL<br>START WHEN SWITCH CLOSSES |
| 10 | 10 |  |
| 11 |    |  |
| 12 |    |  |
| 13 |    |  |
| 14 |    |  |
| 15 |    |  |
| 16 |    |  |
| 17 |    |  |
| 18 | 18 | } N.O. CONTACT. CLOSSES<br>ON PHASE REVERSAL           |
| 19 | 19 |  |
| 20 | 20 | } N.C. CONTACT. OPENS<br>ON PHASE REVERSAL             |
| 21 | 21 |  |
| 22 | 22 | } N.O. CONTACT. OPENS<br>ON MOTOR OVERLOAD             |
| 23 | 23 |  |
| 23 | 23 | } N.C. CONTACT. CLOSSES<br>ON MOTOR OVERLOAD           |
|    |    |  |



MAXIMUM MOTOR HORSEPOWER	VOLTS AC					PRIMARY WIRE SIZE	
	200V	208V	220V - 240V	380V - 415V	440V - 480V	LINE TERMINAL WIRE SIZE PER PHASE	SERVICE ENTRANCE GROUND LUG WIRE SIZE
25 HP	25 HP	30 HP	50 HP	60 HP	#14-1/0 AWG	(2) #10-1/0 AWG	
40 HP	40 HP	50 HP	75 HP	100 HP	#4-4/0 AWG	(2) #10-1/0 AWG	
60 HP	75 HP	75 HP	125 HP	150 HP	#4-350 MCM	(2) #10-1/0 AWG	
100 HP	125 HP	125 HP	200 HP	250 HP	(2) #3/0-250 MCM	(2) #10-1/0 AWG	
150 HP	150 HP	200 HP	300 HP	400 HP	(2) #3/0-350 MCM	(2) #6-250 MCM	

NOTES:

- POWER MONITOR SIGNALS ANY OF THE FOLLOWING FAILURES:  
LOW VOLTAGE  
LOSS OF VOLTAGE  
PHASE REVERSAL
- 1T FIELD TERMINALS ARE LOCATED AT BOTTOM OF SIDE MOUNTED RELAY PANEL. SEE DETAIL A
- 2T, 3T & MANUAL STOP JUMPER ARE LOCATED IN THIS AREA.
- EXTRA (OPTIONAL) TERMINALS ARE LOCATED IN THIS AREA.

INTERNAL LAYOUT & EXTERNAL HOOKUP MODEL M450 ELECTRIC FIRE PUMP CONTROLLER	DRAWN	SR	5-22-98	<b>METRON, INC.</b> DENVER, CO.
	CHECK	KH	5-22-98	
	APPD	X.S.	5-22-98	
CH33013C				SCALE N.T.S SHEET 1 OF 1